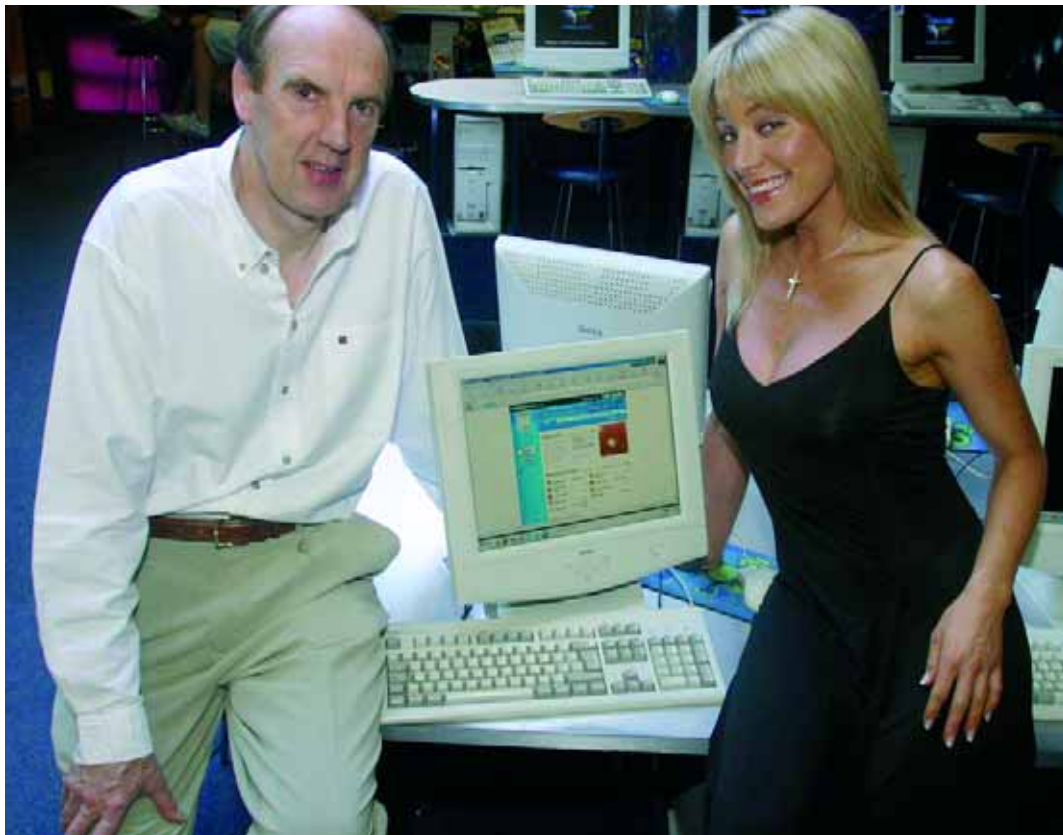


The launch of [www.rehablotteries.com](http://www.rehablotteries.com) represents another first for Ireland's most innovative lottery firm

John McGuire, managing director, Rehab Lotteries, with model Una Gibney at the launch of Ireland's first online lottery site.



## CyberLottery!

Ireland's first internet lottery games, offering big money prizes at the click of a mouse, have been launched by Rehab Lotteries.

Earnings from the new games, available at [www.rehablotteries.com](http://www.rehablotteries.com), will go towards the development of Rehab's home-based and residential respite care programmes for people with disabilities across the country.

Jackpots of up to €10,000 are on offer from nine different games on the site, including scratch cards, bingo and keno. Stakes range from 25 cent to two euro per play and payment is by means of credit card which means minors are unable to play.

Speaking at the launch of the initiative, Rehab Lotteries managing director, John McGuire declared: "This is a very exciting development for Rehab. Apart from being Ireland's first online lottery, it is undoubtedly the most serious attempt yet in this country to use the

internet to generate fundraising income for good causes.

"Internet usage is showing rapid growth in Ireland with 40 per cent of all Irish homes now having web access and of all Irish adults, some 38 per cent are now purchasing from home on the internet. This medium is ideal for the distribution of new and fun lottery products and we are confident that this channel will raise significant funds for our respite care programme."

Dr McGuire said that because of the very low operating costs associated with the internet, the games have very high prize payout levels and so offer a much greater winning experience than similar products available in regular retail outlets. On some games, it is possible to win on more than one occasion per play. The games are high on entertainment value in that they have very attractive interactive visuals accompanied by audio sounds.

The technology required to create a highly secure lottery website has been provided by US owned Lottery Network Services Ltd which is a company specialising in the development of lottery game software. New games are expected to be introduced on a regular basis to keep the site fun and fresh.

At present, RehabCare operates four purpose-built respite care centres which give many people with disabilities from around the country their only opportunity to take a break, in addition to providing home-based respite in various counties which give primary carers relief from the rigours of round the clock caring.

"There is huge demand for respite and home support services. Respite is very much needed throughout the country and immensely important in the lives of families of people with disabilities," said Dr McGuire, "and Rehab is very keen to further enlarge its network of services nationally."

RehabCare's chief executive has been conferred with an honorary doctorate by the National University of Ireland in tribute to her unstinting efforts on behalf of people with disabilities



**Dr Angela Kerins, pictured following her recent conferring ceremony in UCD's O'Reilly Hall with (from left) Joe Treacy, chairman, Rehab Group; Frank Flannery, chief executive, Rehab Group, and Des Cashell, chairman, RehabCare.**

## Doctorate for Angela

RehabCare chief executive Angela Kerins has been conferred with an honorary Doctor of Law degree by the National University of Ireland in recognition of her services to people with disabilities.

Angela, who also chairs the National Disability Authority, received the honour from NUI Chancellor Garret Fitzgerald at a special ceremony in UCD, which was attended by her husband Sean and children, Louise and Hugh, along with a large number of Rehab Group staff, service users and Board members.

Paying tribute to Angela for all her achievements in the world of disability, UCD

Registrar Dr Caroline Hussey told the gathering:

“In 2003, designated European Year of People with Disabilities, it can be claimed that modest, but significant, improvements have taken place in societal attitudes in Ireland towards people with disabilities. From a late start and poor historical record, Ireland now ranks high on the list of nations considered progressive in the field of disability.

“The expectations of society about the rights and requirements of all citizens have changed, and reform of services to people with disabilities is finally becoming a reality.

Promoting and achieving quality and best practice in service provision requires ingenuity, a talent to do battle and the stubborn refusal to accept the constraints of the status quo. Those who know her will concede that Angela Kerins fulfils all these criteria.”

Speaking at a special Rehab celebration to mark the event, Rehab Group chief executive Frank Flannery said the conferral was a great personal achievement for Angela which bore testament to her remarkable tenacity and her commitment to the cause of people with disabilities. Additionally, it was a great honour for Rehab that such a tribute should be paid to a member of its staff.

Extra Government funding will lead to improved services for people with disabilities around the country



The additional capital will provide funding for much-needed repairs and improvements to buildings and transport facilities

## €50m funding welcome

The Rehab Group has welcomed extra expenditure totalling €50 million that has been made available by the Department of Health for services to people with disabilities.

The package includes an extra €15 million for services for people with intellectual disabilities and people with autism, €5 million for services for people with physical and sensory disabilities, along with funding for emergency residential places and day services for young adults who have left school. Capital funding for disability services is also being allocated to the health boards.

Said Rehab Group chief executive, Frank Flannery: "This additional money will mean that disability service providers can offer an improved service

to many people with disabilities, their families and carers, which will contribute towards an enhanced quality of life."

"Many services to people with disabilities have been deficit funded for years. The Rehab Group has long maintained that improved health and social care services such as day services, residential care, supported accommodation and respite care services are needed to meet the changing needs of the 10% of people in Ireland who have a disability."

Mr Flannery added that the revenue funding increase will allow the provision of both new and improved services to people with identified unmet needs and will go some way towards resolving current deficits in services. He hoped the

significant agreed deficit in staff numbers would be resolved in the 2004 Estimates.

The additional capital will provide funding for much-needed repairs and improvements to buildings and transport facilities to existing services for people with both intellectual disability and autism and people with physical and sensory disabilities.

"People with disabilities deserve high quality services that meet their needs and wishes. These services cannot be provided on a shoestring and it is imperative that funding keeps pace with the needs of people with disabilities, their families and carers."

Rehab Foundation is providing support to a small group of Irish nuns who are engaged in a brave struggle to help victims of South Africa's AIDS crisis regain their dignity



The holiday brochures speak of the lavish decadence of Sun City; the panoramic views of Cape Town from the top of Table Mountain; and the thrill of exploring the country's vast wilderness on safari.

But for millions of people living away from the gaze of the tourist hordes, South Africa is a paradise lost, a beautiful land that has been horribly disfigured by the ravages of HIV/AIDS.

The World Health Organisation estimates that some six million people will die from the disease in South Africa alone over the next 10 years – roughly the same as the death toll in the Holocaust.

Recent statistics also reveal that one in four pregnant women in the country are HIV positive. As a result, approximately 200 babies are born with the virus every single day, adding up to a figure of 70,000 a year.

In the face of human tragedy even on such a monumental scale, the world has been found wanting. But at a local level,

groups such as the Sisters of Mercy are engaged in an heroic struggle to give at least a small number of children back their dignity.

The 55 participants on the recent Rehab Foundation fundraising trek to South Africa got the opportunity to step beyond the well-beaten path to the country's biggest tourist traps to see their work in the St Francis Rainbow Cottage orphanage on the outskirts of Johannesburg. The purpose of the visit

was to hand over a cheque for 30,000 Rand to Sr Magdalene Green, who has lived and worked in South Africa for over 50 years and who runs the orphanage with a small group of fellow Irish nuns.

St Francis Rainbow Cottage is home to thirty children ranging from just a few weeks to six years of age. The 16 girls and 14 boys are cared for by a team of dedicated nursing staff and volunteers, who work hard to ensure that the chil-

## Rehab trek for Africa



**Brian Corcoran, the youngest participant on the Rehab Foundation trek to South Africa, and Bernie Lalor make new friends at the St Francis Rainbow Cottage orphanage.**

dren are not only well fed and cared for, but that they also feel loved and secure.

Said Sr Magdalene: "Two thirds of the children in the orphanage are HIV positive. Many of them have lost their mothers, or in some cases, both parents to AIDS. Others were abandoned and referred to the orphanage by social services."

But in many ways, the children cared for at the orphanage are the lucky ones. Millions more in South Africa are left to fend for themselves due to bereavement or abandonment. In many cases, older children are left to care for younger siblings. They have no childhood.

In St Francis Rainbow Cottage, children are encouraged to be children – to play and learn. Activities include early childhood learning, games in the orphanage play area, walks and parties. At the

weekends, many of the children visit host families for breaks away.

Four of the children are due to start school this year, an achievement that has caused great excitement among the staff and volunteers at the orphanage. Initially, many of the children would not have been expected to reach school going age. But as one of the carers remarked: "It's amazing what a bit of love and proper care can achieve."

However, it is not only children with HIV/AIDS who are benefiting from the work of the Sisters of Mercy. Close to the orphanage, the Sisters also run a hospice providing care and medical support for 48 adults dying with AIDS. Plans are also well underway to open a shelter for AIDS orphans and abused women and children early in the New Year. The shelter will be located on the outskirts of

Johannesburg, close to the bustling Education Centre also run by the Sisters of Mercy.

Over the years, this Education Centre – which has a fully equipped computer laboratory financed by Rehab Foundation – has enabled hundreds of South Africans to return to school and complete their matriculation certificate in subjects such as English, Afrikaans, Science and Biology. It also provides vocational training in everything from computer skills, to bricklaying, plumbing and shoe repairs.

At a time when unemployment is as high as 90% in some townships, the training provided by the Sisters of Mercy plays an important role in helping many young South Africans to find jobs and break out of the cycle of poverty.

**If you would like to support the valuable work that the Sisters of Mercy are doing in South Africa, you can send your donations to the Sisters of Mercy account at the Standard Bank; account number 02 075 0854; branch code 011 842.**

**Gandon E-Recycling employee, John Cousins, at work at the company's Tallaght plant. The jobs potential from recycling electrical goods such as computers is huge.**

**New EU recycling laws could produce major spin-offs for workers with disabilities**



# Recycling jobs boost

A new EU recycling initiative due to come into effect next year is set to generate substantial new job opportunities for Irish people with disabilities as well as helping to protect Ireland's flagging green image.

The European Commission's Waste Electrical/Electronic Equipment (WEEE) directive will make it illegal to dump goods such as fridges, washing machines and computers in our shrinking landfill space.

More importantly, by 2006 the responsibility for disposing of electrical and electronic products will shift from the consumer to the manufacturer – leaving them with little choice but to support recycling or refurbishment initiatives.

In order to capitalise on this potentially massive new market, Rehab Recycling

Partnership has already invested considerable energy and resources into developing its capacity to recycle electrical and electronic goods. In January 2003 it opened its new division – Rehab Electronic Recycling – which already employs 20 people at its Tallaght base.

“We believe the WEEE directive has the potential to create a serious number of jobs for people with disabilities in Rehab Recycling, in Ireland generally, and

indeed throughout Europe when it comes into full force, and as levels of this waste continue to rise,” says Bob Rowat, general manager, Rehab Recycling Partnership.

“There is a huge waste problem emanating from electronic and electrical equipment reaching the end of its life or becoming redundant through rapid technological change and according to the Environmental Protection Agency it is now one of the fastest growing waste



streams in the EU. The personal computer market alone has a growth rate of 20-30% per annum due to the short lifespan of machines that are usually just thrown away.”

According to Mr Rowat, Rehab Electronic Recycling’s service is targeted at the general public and the business community who are gradually becoming aware of the WEEE directive.

“Due to its potentially hazardous nature, the consumption of resources and expected growth, waste from electrical and electronic equipment has been identified as a priority by the European Commission”, he says. “Our electronic recycling operation is based on the WEEE directive to prevent waste; increase reuse and recycling and minimise the environmental risks and impacts associated with

recovery and disposal of waste electronic and electrical goods.”

Mr Rowat adds that information security is an important issue and one that is often overlooked in the disposal of redundant IT equipment. Computer systems retain information that is particularly vulnerable during the disposal process.

The Government has set up civic collection points to assist with the recycling of household electronic items, however corporate customers, such as banks, health boards, hospitals and finance companies, often require a higher level of service. They need to be sure that the confidential information stored on their computer has been completely destroyed and that their equipment will not turn up unexpectedly, if they have arranged for it to be recycled. “Rehab Electronic

Recycling provides customers with a total environmental management service for the disposal of obsolete electronic and electrical equipment. We guarantee our customers that the information on their computer hard disks will be totally eradicated and securely destroyed,” he says.

In addition, Rehab Electronic Recycling dismantles obsolete equipment, and individual components, such as integrated chips, processors and disk drives. CD-ROM drives are stripped down to enable the recovery of precious metals and other materials for the recycling market. Apart from plastics, which can be melted down and re-used, computers also include amounts of precious and semi-precious metal such as copper, aluminium, steel, etc. Rehab Electronic Recycling’s total environmental management service ensures the secure and safe disposal of much more than just personal computers. The company also processes everything from printers, fax machines, floppy disks, microfiche, audio and video tapes, to printer and toner cartridges.

“Much of the waste sent to our reprocessing plant in Tallaght has been lying in corridors and offices for years, taking up valuable space and often getting in the way. There has been a tendency in the past to ignore it and leave it there, rather than tackle the problem disposing it in a safe and secure manner,” said Mr Rowat.

“Rehab Electronic Recycling’s service offers Irish businesses a complete service enabling them to adhere to the WEEE directive and dispose of their electronic waste in a guaranteed secure fashion while still looking after their environmental responsibilities at the same time.”

**President Mary McAleese renewed her long-standing association with the organisation by officially opening RehabCare's resource centre and horticultural project in Dundalk**

RehabCare Dundalk was a hive of activity as staff and service users at the centre prepared to welcome a very important guest. Marquees were erected, gardens tidied, food prepared and drama performances rehearsed - all in time for the visit of President Mary McAleese, who accompanied by her husband Dr Martin McAleese, visited Dundalk to officially open RehabCare's resource and horticulture centre.

President McAleese's first call when she visited Dundalk was to RehabCare's innovative horticulture centre, located in the grounds of Mounthamilton House. President McAleese was welcomed by Des Cashell, chairman of RehabCare, and invited to stroll around the five themed gardens and special raised garden for wheelchair users. All of the gardens were designed and developed by service users at the centre under the guidance of horticulture co-ordinator, Gerard Roe, who used to work for the President at Áras an Uachtaráin.

President McAleese, who stopped to plant a golden honey locust tree in the centre's town garden, was obviously greatly impressed by the beautiful array of flowers, plants and shrubs at Mounthamilton House. "We have a garden we are planning to start soon, so we're looking for ideas," she said.

And it soon became obvious just how



# President opens centre

closely she examined the gardens during her short visit to the horticulture centre. During her official opening speech to a packed audience at the RehabCare resource centre later that afternoon, President McAleese remarked that she had noticed something very familiar during her tour of the gardens – rhubarb pinched from Aras an Uachtaran!

"There's a member of staff associated with the horticulture centre, who has friends in the Aras, from shall we say, a

former life working there. This lot were down visiting the Aras, not terribly long ago, and when I visited the horticulture centre today, I recognised the Aras rhubarb as soon as I saw it! There it was planted, and indeed doing very well in the good Dundalk soil", she told the bemused crowd.

Prior to delivering her speech, the President had spent time touring the RehabCare Resource Centre which is situated right in the heart of Dundalk town



President Mary McAleese and her husband Martin meet some of the cast members of Encore Productions at the official opening of RehabCare Dundalk last July.

centre, in a building that was once part of the PJ Carrolls cigarette manufacturing complex. The President spent time chatting to both staff and some of the centre's 41 service users, including members of the local NRAC committee. In her speech, the President explained how impressed she was by what she saw during her tour of the centre.

"It is so exciting what is happening here," she said. "It has energy and imagination and most importantly it is a place where people with special needs can grow in an environment where their skills are encouraged and developed and they are allowed to grow in independence.

"You are creating that resource where people can grow and flourish and live in the kind of self-pride that comes of living life on your own terms, doing things

that are exciting, interesting and fulfilling.

"There is great respect here for the individual. Nobody is saying 'this is what you should be doing'; instead they're asking, 'what would you like to do for yourself, what are you interested in and what kind of things do you dream about?'"

The President also paid tribute to the strong working relationship that exists between RehabCare and the North Eastern Health Board. "If ever there was a seed that has blossomed it is RehabCare here in Dundalk, and it is has blossomed so brilliantly under the great partnership that has been nurtured between RehabCare and the North Eastern Health Board", she said.

The President's words were echoed by Paul Robinson, chief executive, North

Eastern Health Board and Angela Kerins, chief executive, RehabCare who spoke of the person-centred approach taken by RehabCare and the need to think outside the box in order to deliver the best and most appropriate services for everyone.

The highlight of the President's visit to the centre was a special performance by the cast of Encore Productions, the nationally acclaimed drama company, which enables fourteen service users, half from RehabCare and half from St John of God Brothers' Hilltop Services, to access the world of drama.

The drama company performed excerpts from their award-winning production of the 'Wizard of Oz' which was specifically written to mark the European Year of People with Disabilities and aims to raise awareness of disability issues. The group also performed a specially choreographed dance to the Special Olympics anthem, before finishing with a rousing song they had written for the visit in which the service users tell the President "there's nothing that we can't do, you tell them what we told you. We're fantastic, happy and proud and we're gonna sing it loud."